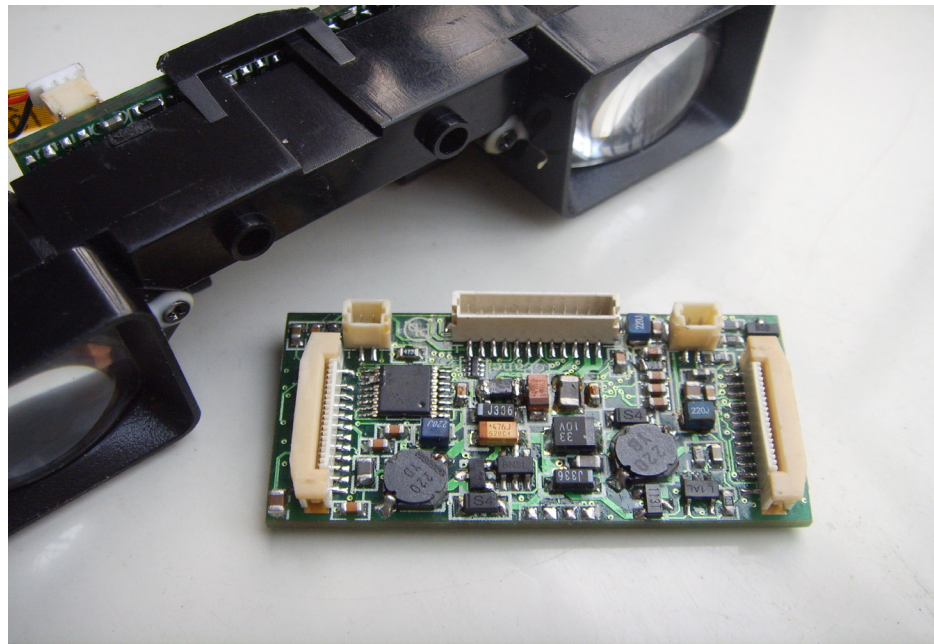


## FEATURES

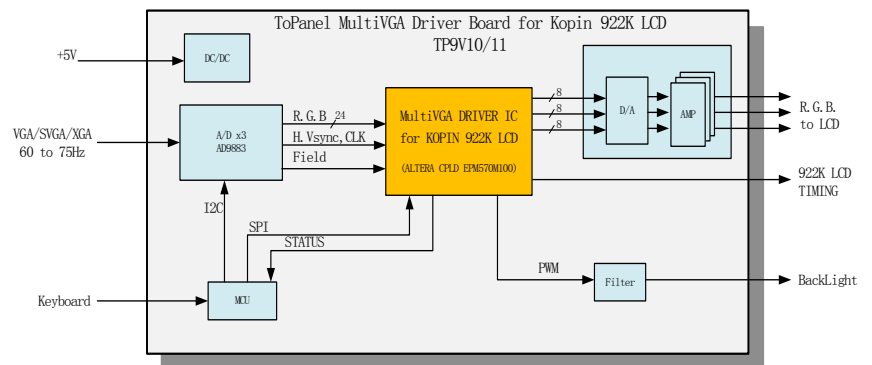
- **MultiVGA Input:**  
VESA Standard VGA/SVGA/XGA  
60Hz to 75Hz  
Auto Detect Input Mode,  
Auto Adjust H/V Scaling/Position/Phase
- **Active Display Resolution:**  
VGA ( 640 × 480 × RGB pixels)
- **Dedicated Design for:**  
KOPIN BDM-922K-NE Module
- **3D Stereo Support:**  
Field-Sequential from PC Display card.
- **Color OSD Show:**  
**(TP9V11M-5 only)**  
Menu,VGA Mode, LOGO
- **Image Parameter Adjustable:**  
Contrast/Brightness,  
Right/Left Image Swap,  
Only 3 Keys needed
- **Compact Outline: 42 × 21mm**  
Suit with BDM-922K-NE Module
- **Low Power Consumption:**  
Single +5.0V/ 250mA,  
Adapt to USB



Micro-LCD Drive Board TP9V10M/TP9V11M Based on Advanced programable CPLD, Compatible with VGA/SVGA/XGA up to 75Hz, provided with 3D Stereo, Color OSD. MultiVGA and USB power supply make it suit to the PC application.

TP9V10M/TP9V11M significantly accelerates product development for OEM customers using The KOPIN BDM-922K-NE Module that contains 2 sets 922K color LCD display, backlight, and lens, application for their Video Eyewear and other products.

## BLOCK DIAGRAM



**ToPanel Technology Company**

2-401, Bld.4, TianMian, FuTian,

Shen Zhen, China

Tel: +86-755-83983840

Fax: +86-755-83996761

support@topanel.com.cn

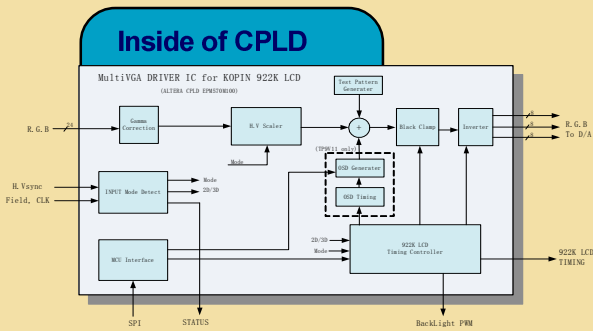
**ToPanel Technology Company**

www.topanel.com.cn

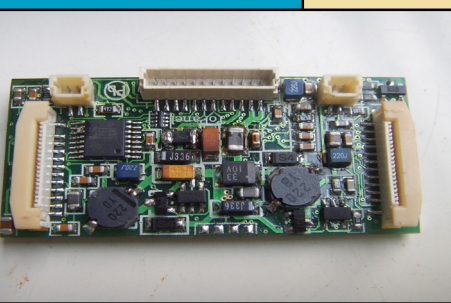
## KEY TECHNOLOGY

The Technology of Programmable CPLD make it possible that various function integrated in a small space and very low power needed.

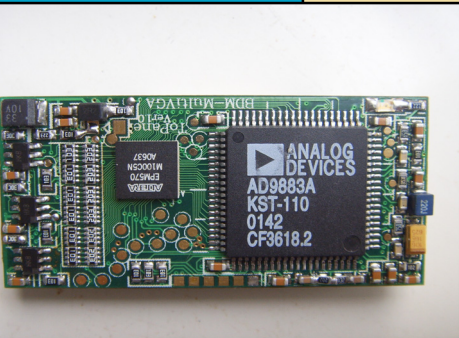
TP9V10/11's many characteristics, MultiVGA, OSD Menu, LOGO, 3D Stereo, will help video eyewear manufacturers to create many stylish product that consumers want.



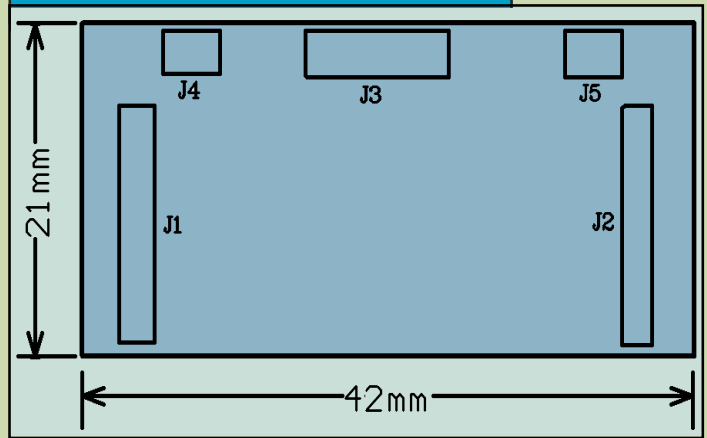
### Front Side



### Back Side



## MECHANICAL OUTLINE



## CONNECTOR

### J1, J2 (LCD Display):

PIN	SYMBOL	DESCRIPTION
1~20	LCD Display connector	Kopin CyberDisplay™ 922K Display

### J3 (Input):

PIN	SYMBOL	DESCRIPTION
1	BLU	VGA BLUE Input.
2	GRN	VGA GREEN Input.
3	RED	VGA RED Input.
4	AGND	VGA Analog GND
5	HS	Horizontal Sync Input
6	VS	Vertical Sync Input
7	FIELD	VGA FIELD(SDA) Input
8	KEY	Ext. Keyboard Input
9~10	DGND	Power Ground
11~12	VCC	+5V/250mA Input

### CH4, CH5 (Backlight):

PIN	SYMBOL	DESCRIPTION
1	BL+	2~10mA adjustable
2	BL-	

### Ext. Keyboard

