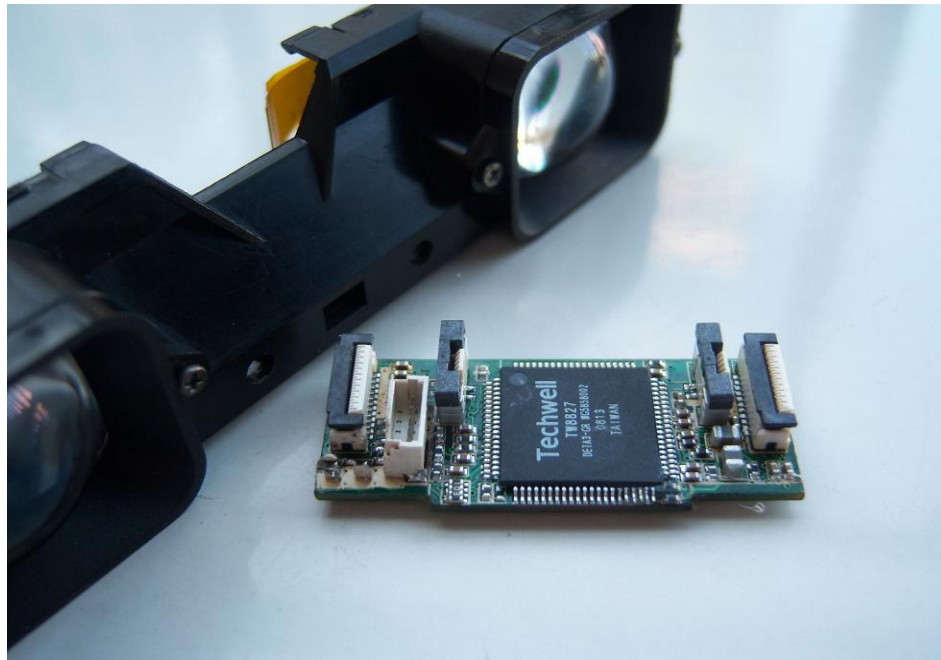


## FEATURES

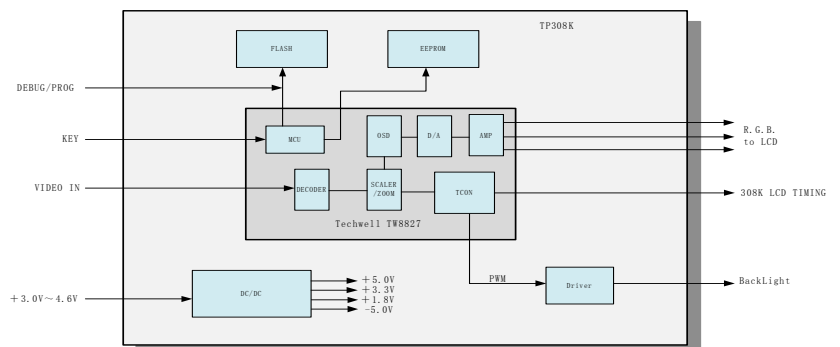
- **Dedicated Design for:**  
KOPIN BDM-308K-NE Module
- **Active Resolution:**  
WQVGA ( 428 × 240 × RGB pixels)
- **Composite Video:**  
(auto-selecting for either  
NTSC or PAL standard)
- **More Display Aspect Ratios:**  
4:3  
16:9  
PANORAMA  
FULL
- **Image Adjustable with Keyboard:**  
Contrast / Brightness / Aspect Ratio  
Color OSD
- **Compact Outline: 36 × 15mm**  
Suit with BDM-308K-NE Module
- **Low Power Consumption:**  
Input: +3.0 ~ 4.6V / 150mA



Micro-LCD Drive Board TP308 Series Based on Techwell Drive IC TW8827, which provided with Video Decoder, Scaler, Color OSD, MCU and Programmable TCON, it can drive the KOPIN CyberDisplay 308K LCD directly, and provide more Aspect Ratios. Wide input range and Low Power Consumption make it suit to the application with battery supply.

TP308 Series significantly accelerates product development for OEM customers using The KOPIN BDM-308K-NE Module that contains 2 sets CyberDisplay 308K color LCD display, backlight, and lens, application for their camcorders, digital cameras, head mounted displays and other products.

BLOCK DIAGRAM



**ToPanel Technology Company**

2-401, Bld.4, TianMian, FuTian,  
Shen Zhen, China

Tel: +86-755-83983840

Fax: +86-755-83996761

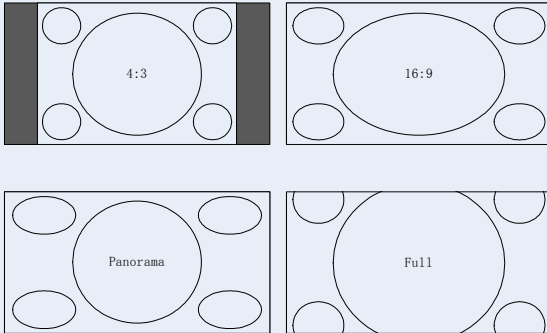
support@topanel.com.cn

**ToPanel Technology Company**

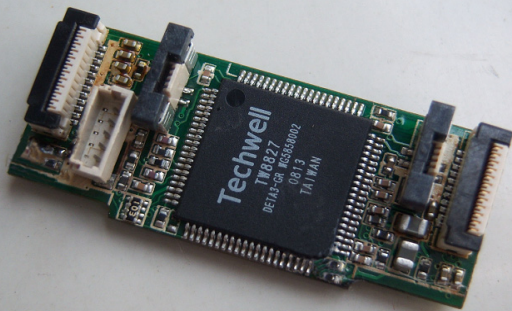
www.topanel.com.cn

TP308 Series many characteristics, More Display Aspect Ratios selection, Image Adjustable, will help video eyewear manufacturers to create many stylish product that consumers want.

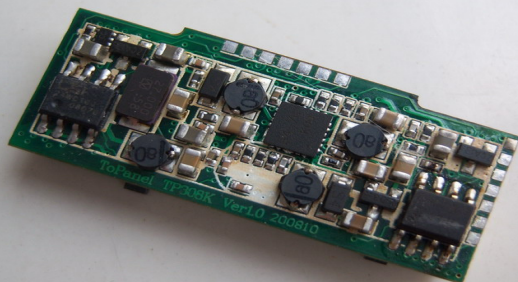
### More Display Aspect Ratio



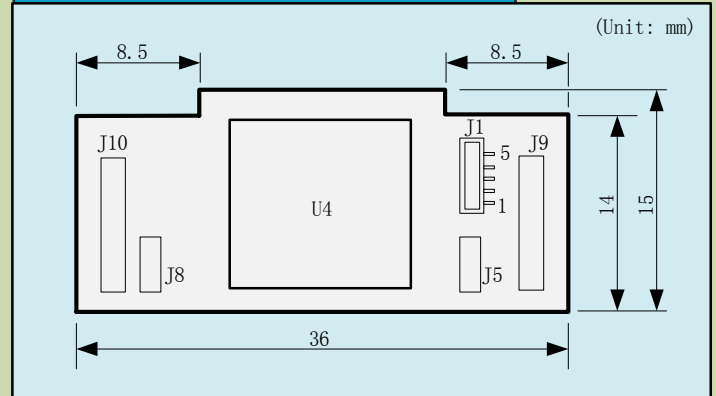
### Front Side



### Back Side



### MECHANICAL OUTLINE



### CONNECTOR

#### J9, J10 (JST 23FXZT-SM1-TF): LCD Display

PIN	SYMBOL	DESCRIPTION
1~23	LCD Display connector	Kopin CyberDisplay™ 308K Display

#### J1 (Input):

PIN	SYMBOL	DESCRIPTION
1	VDD	Power Input (3.0~4.6VDC)
2	DGND	Power Ground
3	Video_In	Composite Video Input (NTSC or PAL)
4	VGND	Video Ground
5	KeyIn	Key board input

#### J4, J5 (JST 04FHSY-RSM1-GAN-TB): Backlight

PIN	SYMBOL	DESCRIPTION
1,2	BL+	2~10mA adjustable
3,4	BL-	

### Ext. KEY BOARD

